

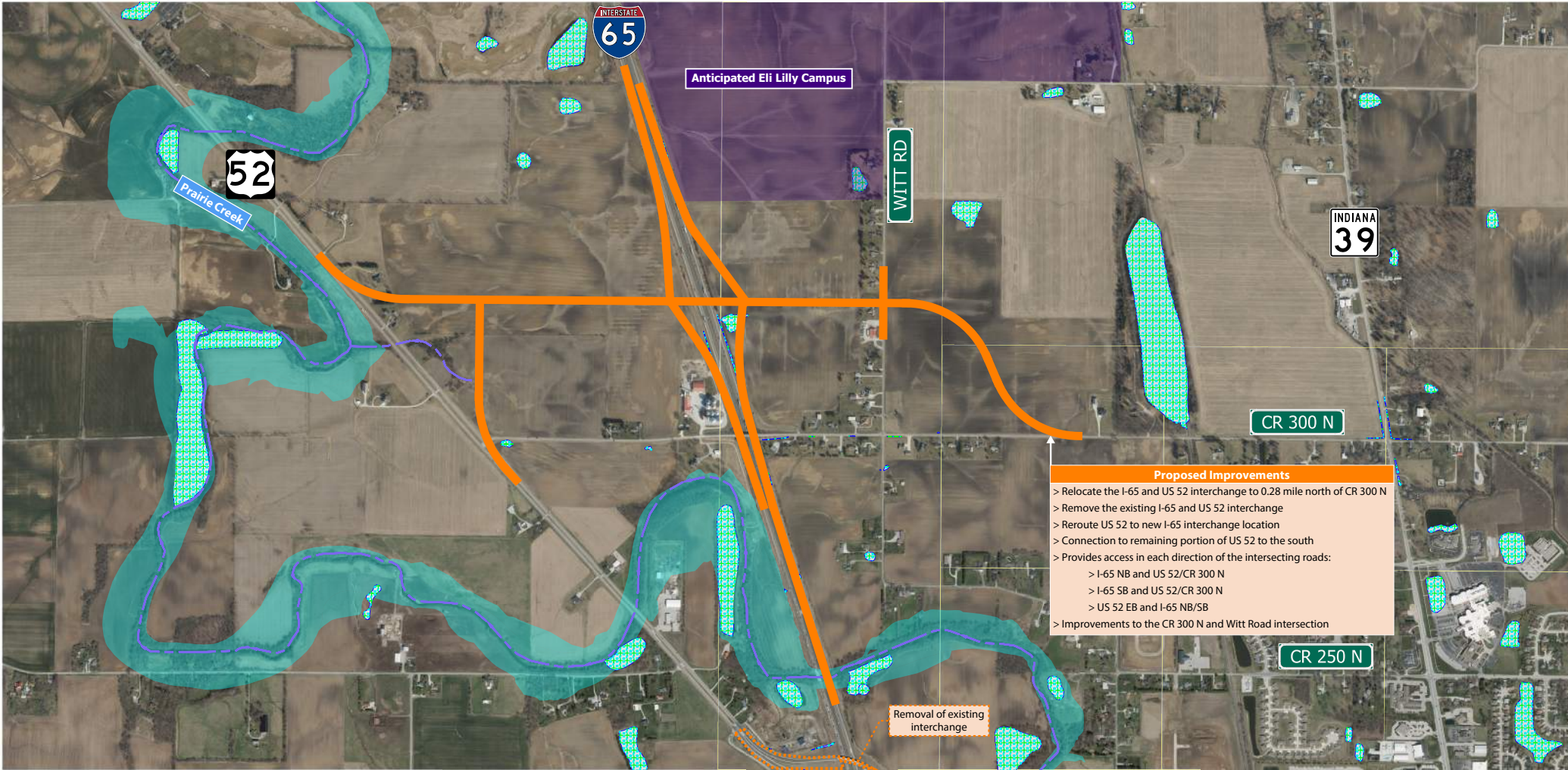
Preliminary Preferred Alternative

Conceptual Alternative 8: I-65 and CR 300 N, Offset 0.28 Mile North

May 10, 2023 - DRAFT - NOT FOR CONSTRUCTION

LEGEND

- Conceptual Alternative 8
- Stream
- Wetland
- Floodplain



0' 500'



I-65 and US 52 Interchange Improvement (DES 2200176)

INDOT Crawfordsville District
Boone County, Lebanon, Indiana

